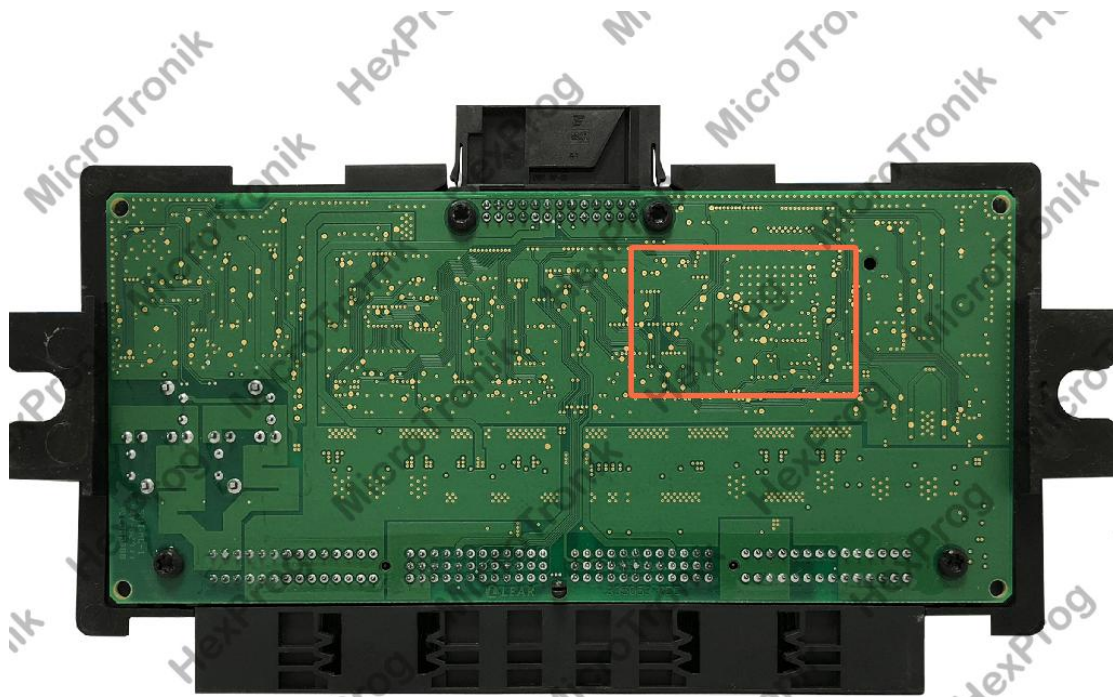


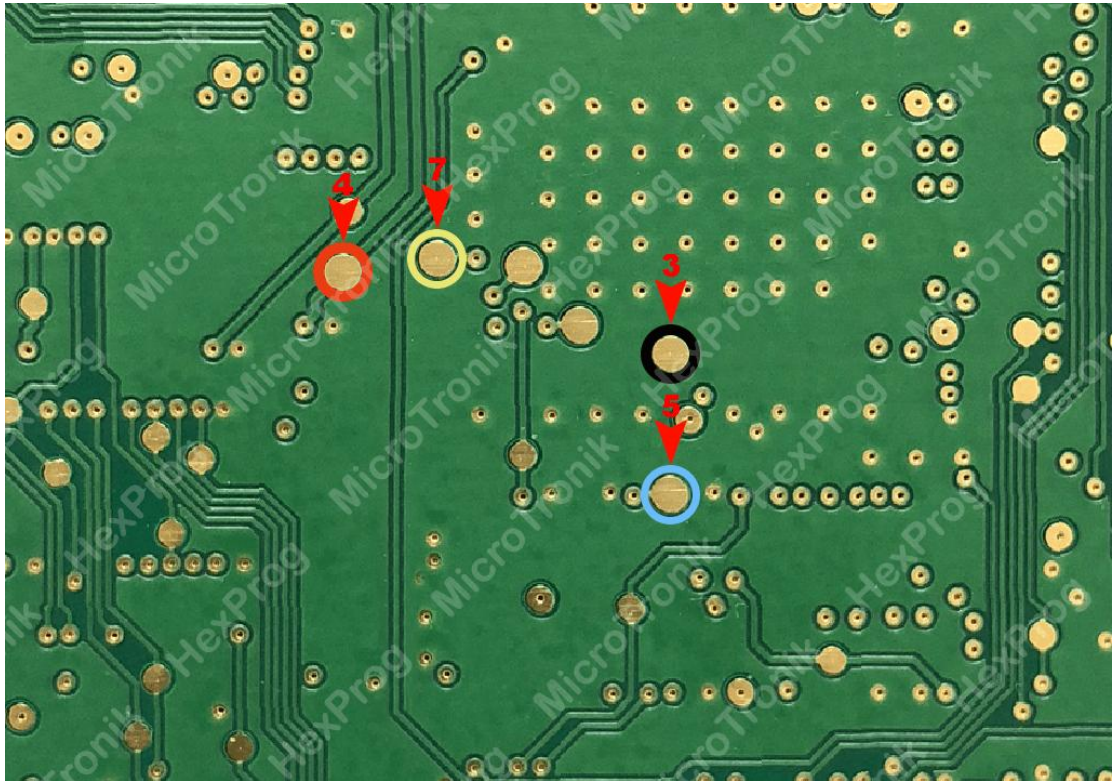
## FRM3BDM WIRING

1. Unplug FRM from the car (Located under driver side trim panel for pedal mechanism. Careless Removal of the module may cause a damage to the car or the control itself, it must be carried under user's RISK)
2. Remove FRM board from the casing



FRM3

3. Solder wires to FRM based on the below connection diagram using BDM cable



### FRM3 Wiring

4. Select the FRM/CPU version from HexProg software
5. Do the function for repair FRM in Software
6. Unsolder wires
7. Connect FRM back to car

